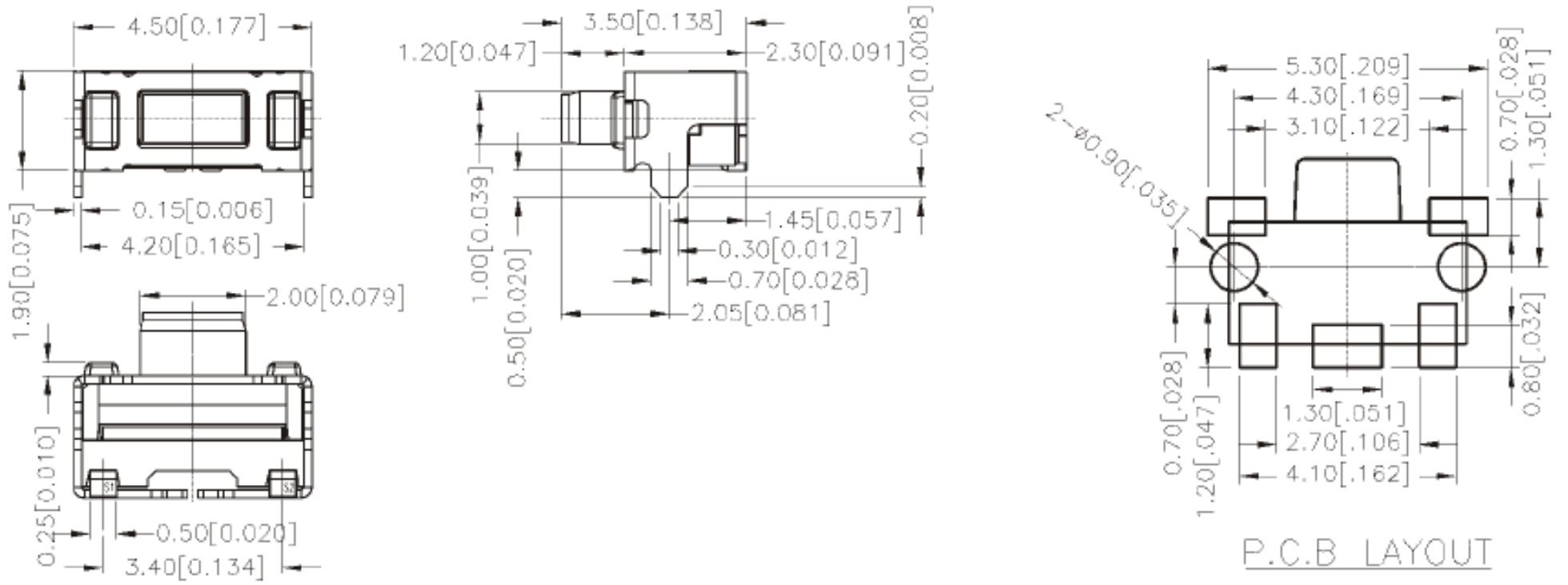


MTA2 SERIES



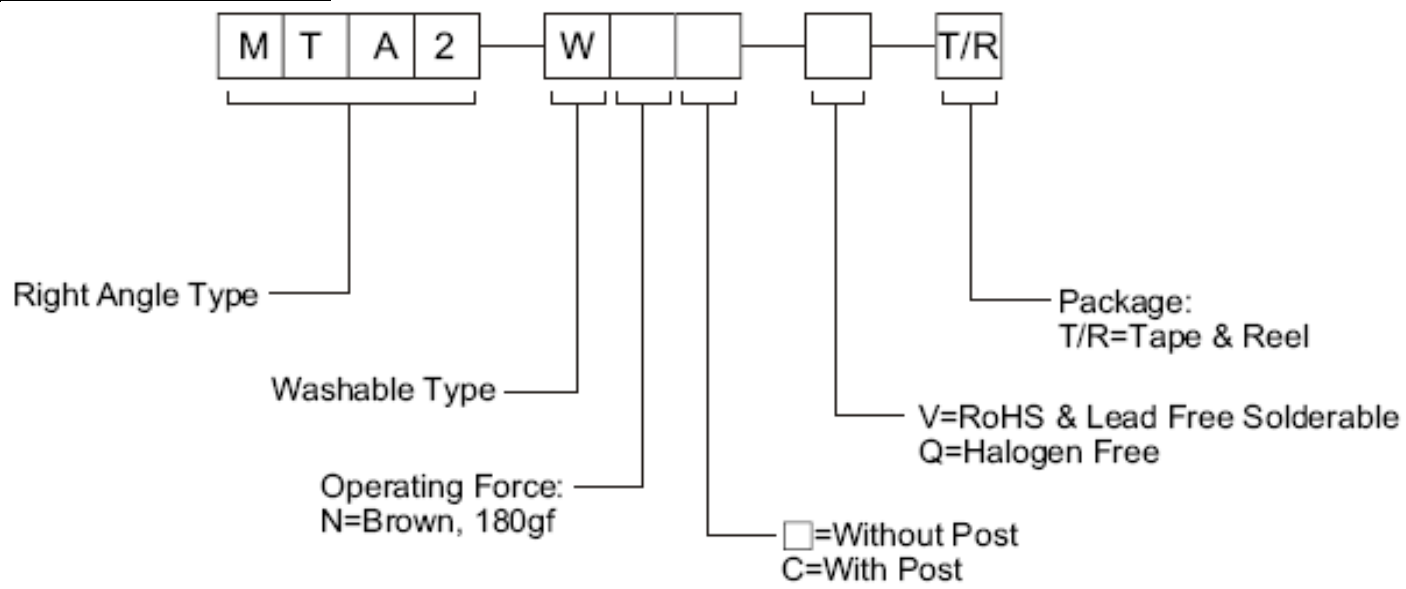
DIMENSION

MTA2



General Tolerance : $\pm 0.2\text{mm}$

HOW TO ORDER



SPECIFICATION

△MECHANICAL

Mechanical Life : 100,000 cycles
 Operation Force : 180±50gf
 Stroke : 0.2±0.1mm

△ENVIRONMENTAL

Operation Temperature Range : -30°C to +80°C
 Storage Temperature Range : -40°C to +90°C

△ELECTRICAL

Electrical Life: 100,000 cycles
 Switching Rating: 50 mA, 12 VDC

MATERIALS

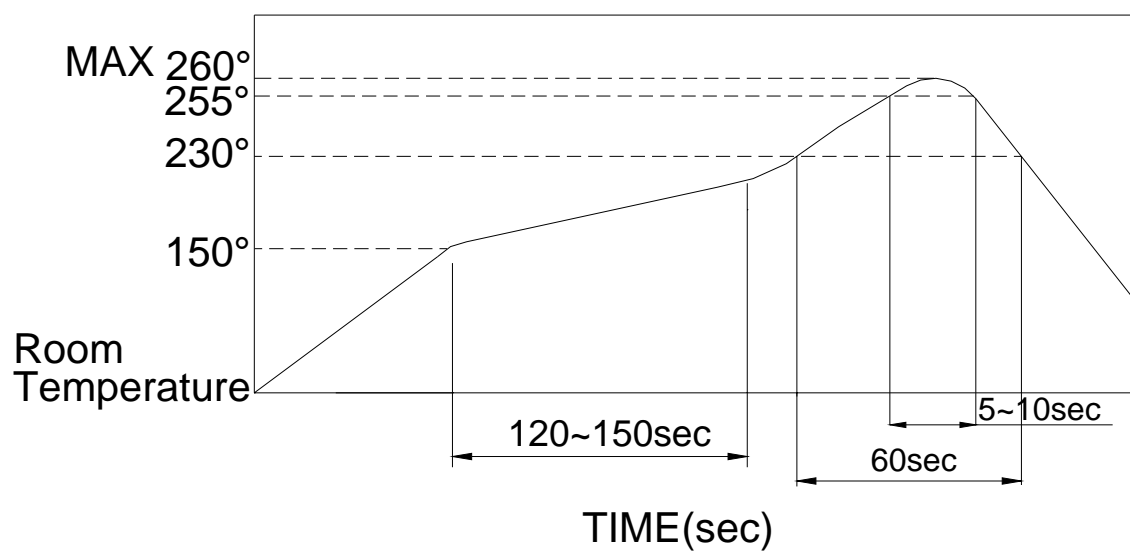
- △COVER : Nickel Silver
- △BLOCK : UL 94V-0 High-temp Thermoplastic
Color : Black
- △STEM : UL 94V-0 High-temp Thermoplastic
Color : Brown
- △ADHESIVE TYPE : TEFLON
- △CONTACT : Stainless steel
- △BASE : UL 94V-0 High-temp Thermoplastic
Color : Black
- △TERMINAL : Brass with silver plating

SOLDERING PROCESS

△HAND SOLDERING : Us a soldering iron of 30 watts, controlled at 350°C approximately 5 seconds while applying solder.

△REFLOW SOLDERING : When applying reflow soldering, the peak temperature or the reflow over should be set to 260°C max.

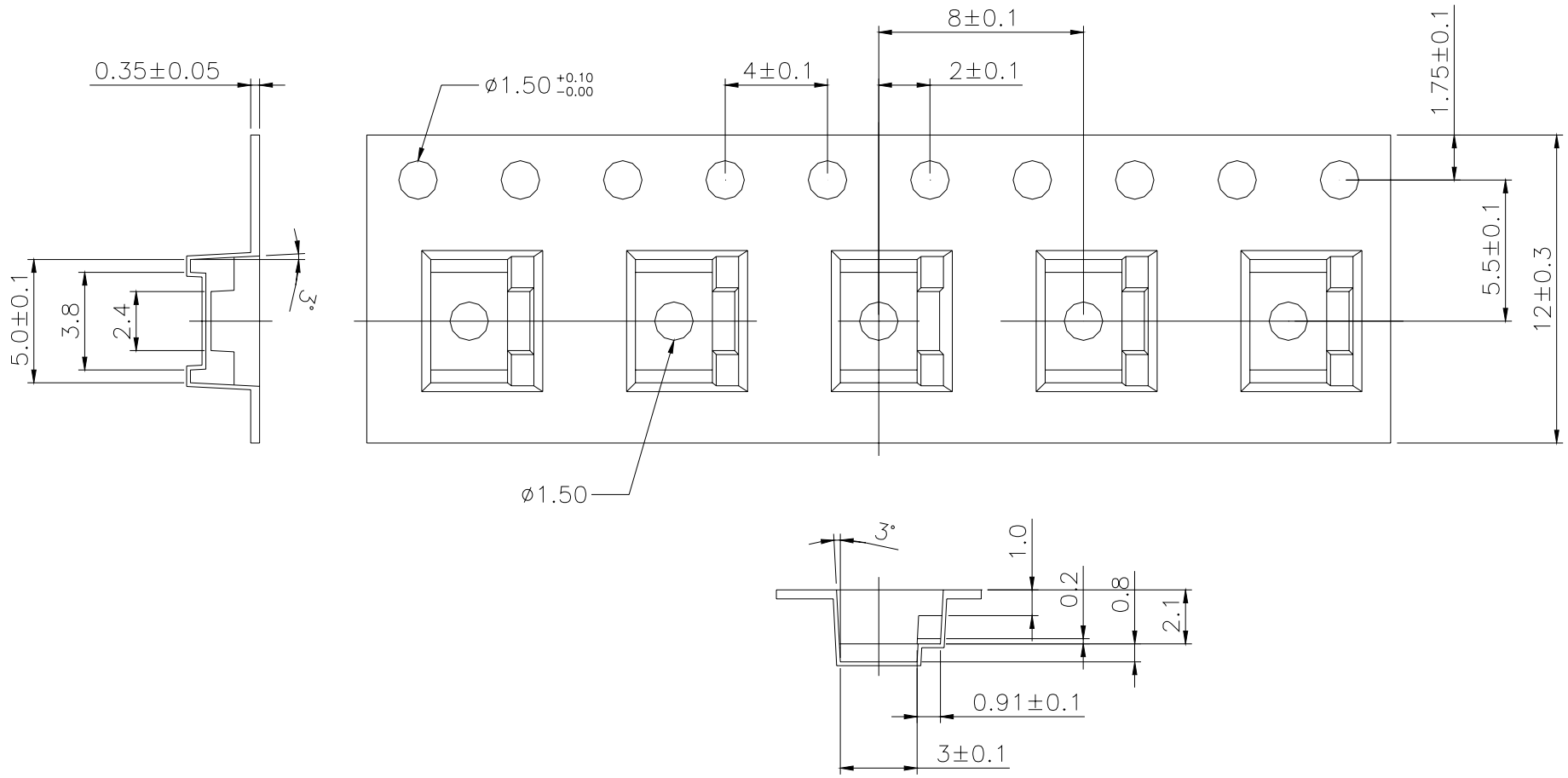
△TEMPERATURE PROFILE :



PACKING

REEL

Part Number	Number Per Reel	Number Per Tube
MTA2	3000	—



General Tolerance : $\pm 0.2\text{mm}$